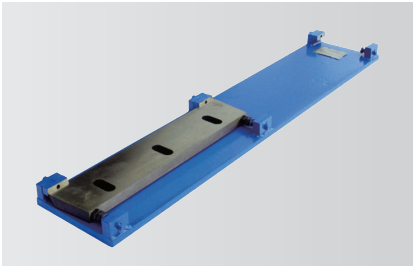


GSC 300



Compact sound-proofed granulators

- Knives adjustable outside the machine
- Compact design
- Different rotor versions available
- Soundproof housing
- Aggressive tangential infeed



Knife Adjustment

Rotor and stator knives are pre-set outside the machine before installation in a supplied fixture. This eliminates the need for knife adjustment inside the machine.



Rotor versions

The GSC granulators are available with different rotor options to suit different applications. All rotors feature the V-cut geometry for producing high quality regrind.



Soundproof Housing

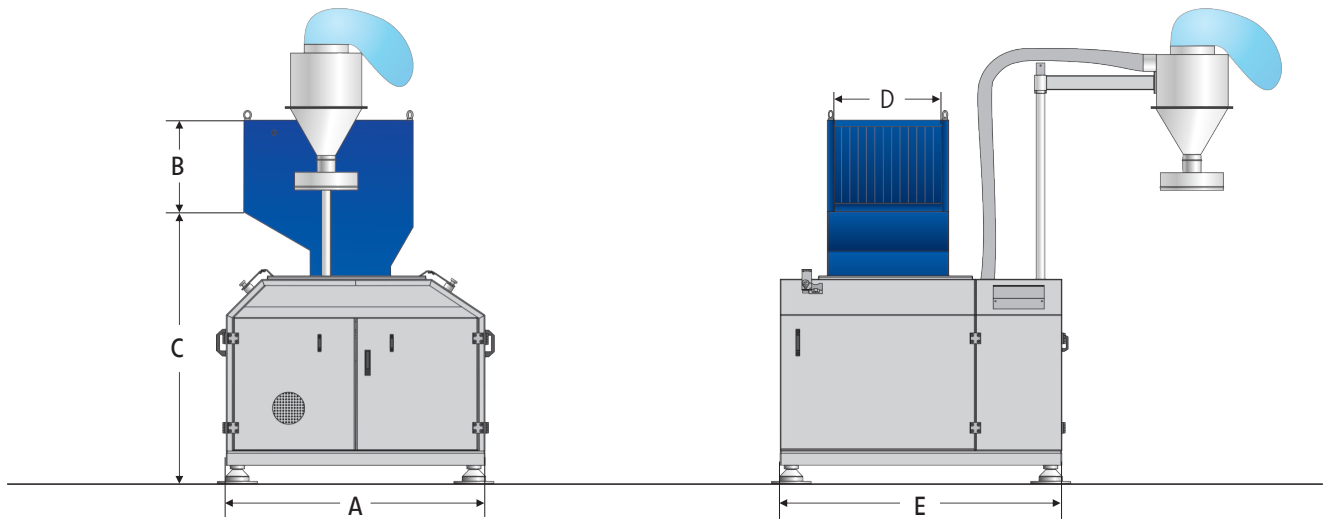
To minimise the required floor space and noise level, the electrical cabinet is integrated into the machine's soundproof housing.

Applications

The cutting geometry of the GSC series allows even voluminous materials to be processed efficiently. The complete GSC granulator produces high quality regrind from injection moulded parts, blow moulded parts, profiles, sheets and film. The GSC 300 series is also suitable for sprues, rejected products and runners. The compact machine design makes it easy to position in existing production environments.

General Description

The GSC 300 series features a rotor diameter of 300 mm with widths ranging from 300 to 1000 mm. The completely welded cutting chamber ensures dependable operation and reliable performance. Designed for inline and central granulation, the machine can be configured to suit different materials and throughput requirements.



Technical Specifications

Type	300/300	300/600	300/1000
Rotor diameter (mm)	300	300	300
Rotor width (mm)	300	600	1000
Drive capacity (kW)	7.5	18.5	18.5
Rotor knives (rows)	3	3	3
Stator blades (rows)	2	2	2
Screen size (mm)	> 6	> 6	> 6
Effective working area (mm)	400 x 290	400 x 590	400 x 990
Weight approx. (kg)	1200	1400	1850

Dimensions

Type	300/300	300/600	300/1000
A (mm)	1550	1550	1550
B (mm)	420	420	420
C (mm)	1570	1570	1570
D (mm)	300	590	990
E (mm)	1300	1600	1900

ZERMA MACHINERY & RECYCLING TECHNOLOGY CO. LTD.

5 Xinjie Rd Xinqiao · Township Ind. Park
 Songjiang · Shanghai · China
 Phone: +86 21 57645573 · info@zerma.com

