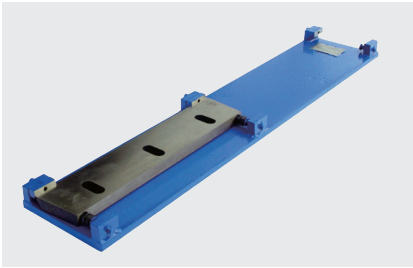


GSC 500

Compact sound-proofed granulators



- Knives adjustable outside the machine
- Compact design
- Different rotor versions available
- Soundproof housing
- Aggressive tangential infeed



Knife Adjustment

Rotor and stator knives are pre-set outside the machine before installation in a supplied fixture. This eliminates the need for knife adjustment inside the machine.



Service Access

To ensure safe operation and quick access for cleaning and maintenance, the GSC 500 machine's cutting chamber is opened hydraulically.



Soundproof Housing

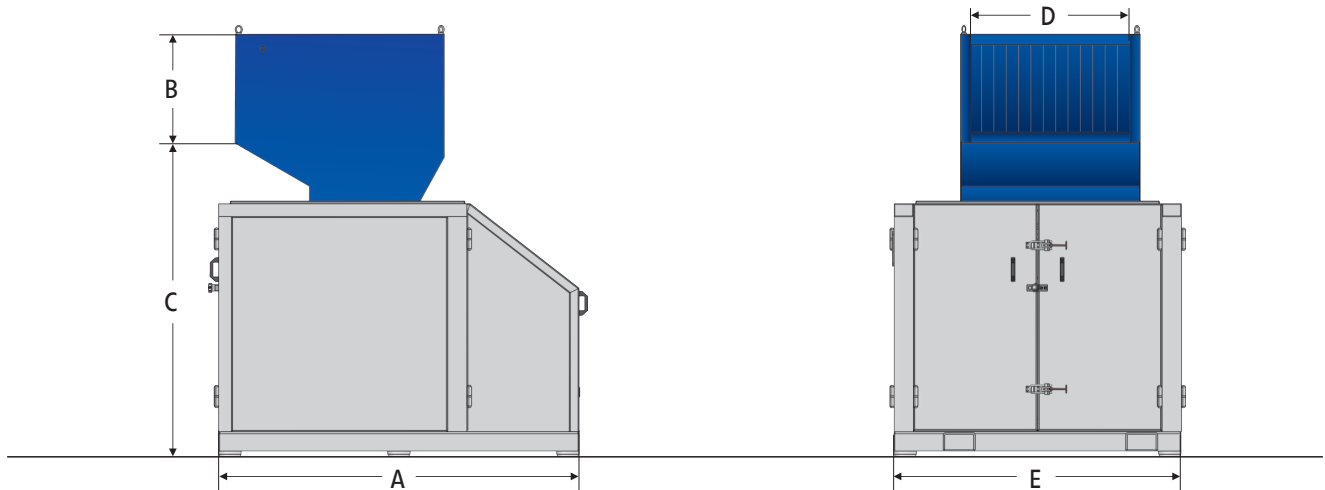
To minimise the required floor space and noise level, the electrical cabinet is integrated into the machine's soundproof housing.

Applications

The GSC 500 series is mainly used for in-line and central granulation of moulded parts, hollow parts, runners and sprues. It is suitable for processing injection moulded parts, blow moulded parts, profiles, sheets and film. With its compact design, the machine can be integrated easily into different production environments.

General Description

The GSC 500 series is available with rotor widths from 500 to 1400 mm and a rotor diameter of 500 mm. The completely welded cutting chamber ensures dependable operation and reliable performance. The machine is designed for versatile use in inline and central granulation applications and can be configured to suit different materials and throughput requirements.



Technical Specifications

Type	500/500	500/700	500/1000	500/1400
Rotor diameter (mm)	500	500	500	500
Rotor width (mm)	500	700	1000	1400
Drive capacity (kW)	30	37	45	45
Rotor knives (rows)	3 or 5	3 or 5	3 or 5	3 or 5
Stator blades (rows)	2 or 3	2 or 3	2 or 3	2 or 3
Screen size (mm)	> 6	> 6	> 6	> 6
Effective working area (mm)	560 x 500	560 x 700	560 x 990	560 x 1400
Weight approx. (kg)	2200	2500	3000	5500

Dimensions

Type	500/500	500/700	500/1000	500/1400
A (mm)	1930	1930	2160	2160
B (mm)	580	580	580	580
C (mm)	1870	1870	1930	1930
D (mm)	515	715	985	1430
E (mm)	1550	1750	2100	2600

ZERMA MACHINERY & RECYCLING TECHNOLOGY CO. LTD.

5 Xinjie Rd Xinqiao · Township Ind. Park
 Songjiang · Shanghai · China
 Phone: +86 21 57645573 · info@zerma.com

