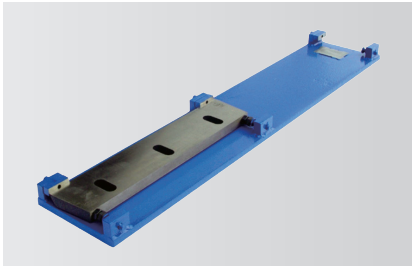


GSE 300



Economical granulators

- Knives adjustable outside the machine
- Compact mobile design
- Different rotor versions available
- Easy access for cleaning and maintenance
- Aggressive tangential infeed



Knife Adjustment

Rotor and stator knives are pre-set outside the machine before installation in a supplied fixture. This eliminates the need for knife adjustment inside the machine.

Applications

The GSE series is designed as an economical granulator for use in house recycling. The cutting geometry of the GSE 300 makes it suitable for grinding runners, sprues and a wide range of moulded parts. The complete GSE granulator delivers high quality regrind for further processing of injection moulded parts, blow moulded parts, profiles, sheets and film.

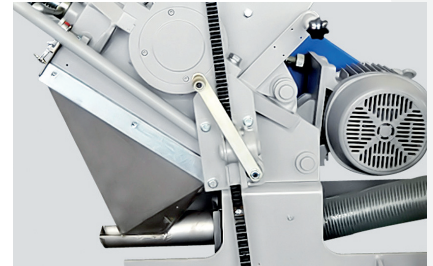


Rotor Versions

The GSE granulators are available with different rotor versions for different applications, allowing the machine to be configured for the required material and throughput.

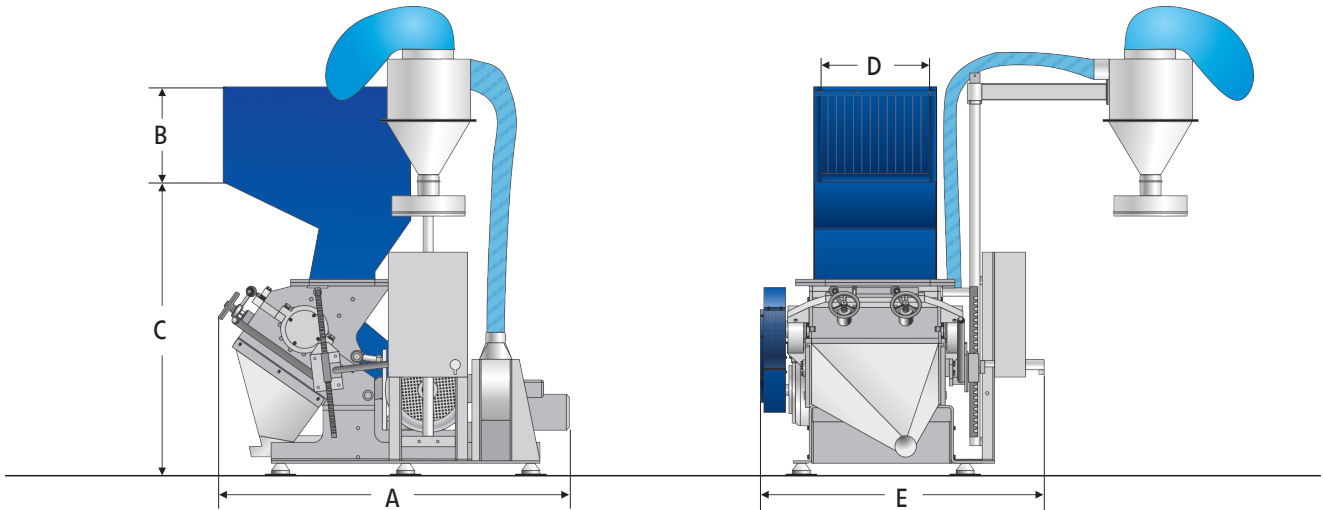
General Description

The GSE 300 series is available with different rotor designs in widths from 300 to 1000 mm and a rotor diameter of 300 mm. The completely welded cutting chamber, combined with the V-cut rotor design, ensures reliable operation and versatile application. The machine design allows quick access to the cutting chamber for rotor and stator knife changes, servicing and screen changes.



Service Access

The user-friendly design of the GSE series allows quick and easy access to the cutting chamber for maintenance and cleaning.



Technical Specifications

Type	300/300	300/600	300/1000
Rotor diameter (mm)	300	300	300
Rotor width (mm)	300	600	1000
Drive capacity (kW)	7.5	18.5	18.5
Rotor knives (rows)	3	3	3
Stator blades (rows)	2	2	2
Screen size (mm)	> 6	> 6	> 6
Effective working area (mm)	400 x 290	400 x 590	400 x 990
Weight approx. (kg)	900	1000	1350

Dimensions

Type	300/300	300/600	300/1000
A (mm)	1760	1810	1370
B (mm)	460	460	460
C (mm)	1420	1420	1420
D (mm)	300	590	990
E (mm)	1085	1350	1540

ZERMA MACHINERY & RECYCLING TECHNOLOGY CO. LTD.

5 Xinjie Rd Xinqiao · Township Ind. Park
 Songjiang · Shanghai · China
 Phone: +86 21 57645573 · info@zerma.com

